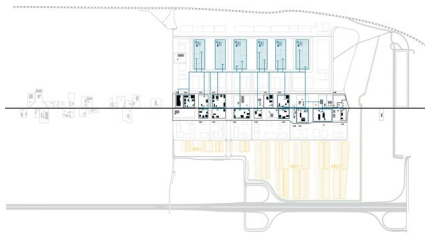
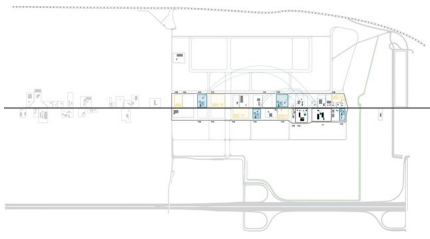


# THE VALLEY - SCHIPHOL TRADE PARK

2016 ongoing, Amsterdam, Netherlands



Building upon West 8's 20 year involvement in the master plan for Schiphol Airport, West 8 in collaboration with KCAP has been commissioned to develop a 5.3 ha parcel within Schiphol Trade Park, south-east of the airport. Entitled **'The Valley'**, this section is envisaged to become a circular hotspot where companies, institutions, universities and the government can collaborate, research and develop a circular economy in relation to products, services and organization.

West 8's master plan for "The Valley" is founded on progressive and circular assumptions. The landscape is designed as a testing ground for circular ideas products. The master plan is guided by four principles that ensure the direction and ambition of the facility continue to develop into the longer-term. These include:

## A Positive Footprint

To strive for constant innovation and improvement in environmental performance measures like the recycling of greywater, enrichment of the poor sea clay soil, increasing biodiversity, and selecting plant species that purify the air are key components in creating a master plan with a positive

footprint. To improve ecosystem management and health in the broadest sense, biodegradable or recyclable and non-toxic materials are selected for paving, lighting, furniture and underground infrastructure.

### **Designing with Nature**

Waste, is in fact nutrients that are part of a natural cyclical process. The cycle of the seasons shows the regenerative power of nature. Thus, the properties of the soil, climate and water resources in the Haarlemmermeer polder form a decisive starting point for the landscape design and planting palette, which includes rain gardens, advanced carbon sequestration and bio-fuel research.

Other SUSTAINABLE INITIATIVES include:

- 100% reliance on renewable energy;
- Sustainable water management with both rainwater and wastewater;
- Designing the landscape to optimize all forms of clean transport (e.g. walking, cycling, and electric vehicles)
- Provision of a high-quality data network
- Supporting and encouraging surrounding sustainability initiatives.
- Creating economic growth at local and regional levels.
- Contributing to an inclusive society.

### **An Iterative Design Process**

The area around “the Valley” will be developed in phases over the next 15 years. During this period the intention is to continuously improve and innovate. This requires an iterative design process that has unsurpassed excellence as the ultimate ambition. Big data from completed phases are evaluated against the vision plan and will provide far greater accuracy for the forthcoming design phases. Relevant data can be extrapolated and informed design decisions made regarding efficient development of the design in future phases of the project.

### **An Inspiring Environment**

“The Valley” is envisaged as a place that revolves around collaboration, communication, discovery, innovation, development and production. Both the buildings and the landscape are tailor-made to accommodate and encourage the experimentation and flexibility.

The project is currently under development.

#### **client**

Delta Development Group & SADC Schiphol Area, Development Company, N.V.

#### **partners**

William McDonough + Partners, Arcadis, Netherlands, KCAP

#### **team**

Martin Biewenga, Rikus Beekman, Maarten Buijs, Giulia Frittoli