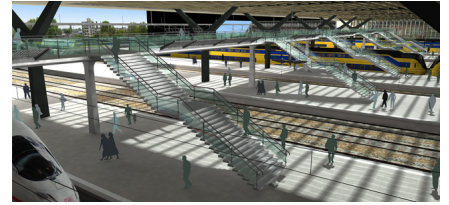
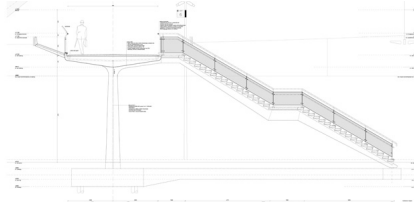
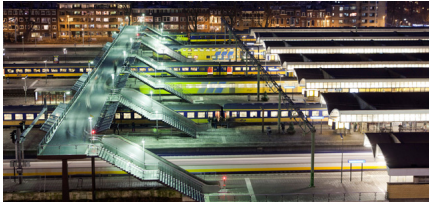


# FOOTBRIDGE CENTRAAL STATION

2007, Rotterdam, The Netherlands



In June 2004, Team CS, a collaboration of Benthem Crouwel Architecten, Meyer en Van Schooten Architecten, and West 8 urban design & landscape architecture b.v., has received the commission to execute the vision presented for the new [Rotterdam Central Station](#).

The first part of the new public transport terminal is a 135m long footbridge, situated on the west side of the station and connecting all 16 platforms. Rail passengers at Rotterdam Central Station can make use of the new footbridge over the tracks, which also functions as an escape route in the event of an emergency.

Length: 135m

Surface: 675m

Engineer: Arcadis

Contractor: Peters Stahlbau gmbh

## client

ProRail/City of Rotterdam

## partners

Benthem Crouwel Architecten and Meyer en Van Schooten

## consultants

Arcadis

## team

Adriaan Geuze, Joost Koningen