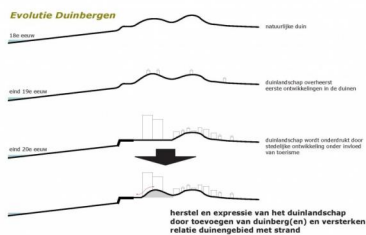
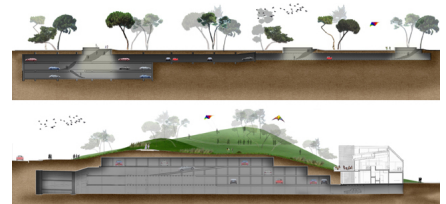


# PLEINGEHELEN DUINBERGEN

2008, Duinbergen Knokke-Heist, Belgium



The area of Duinbergen is characterized by its typical topography: a natural dune formation has adjusted itself to human interference. By adding some new dunes to the landscape it is possible to restore the transition between the beach and the dunes. The new topography offers the possibility to renew and extend the existing underground parking and to introduce new activities.

## client

Gemeentebestuur Knokke Heist

## team

Adriaan Geuze, Maarten van de Voorde, Gaspard Estourgie, Pieter Hoen, Nik Naudts, Igor Saitov, Jelle Therry, Joris Weijs, Claudia Wolsfeld