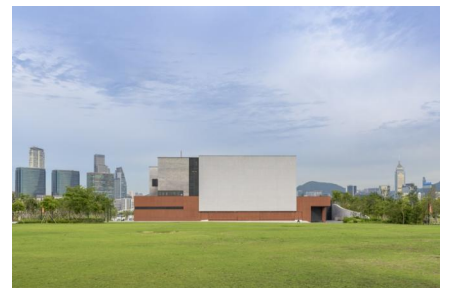
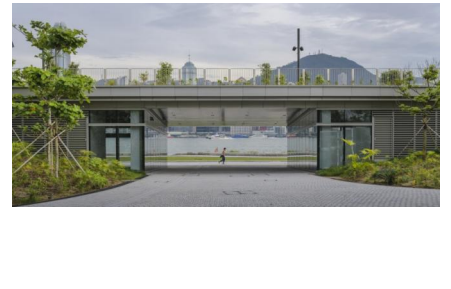
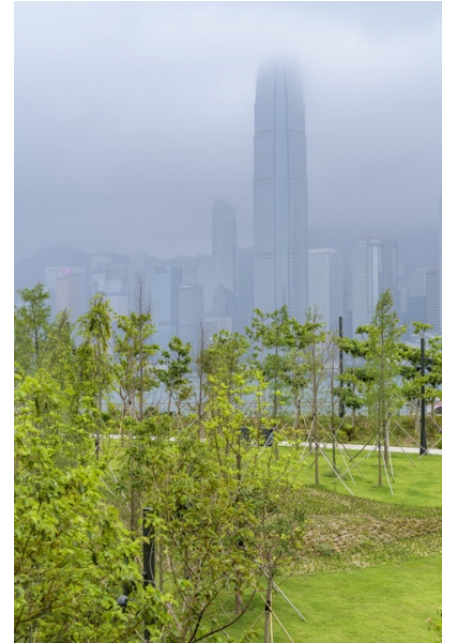
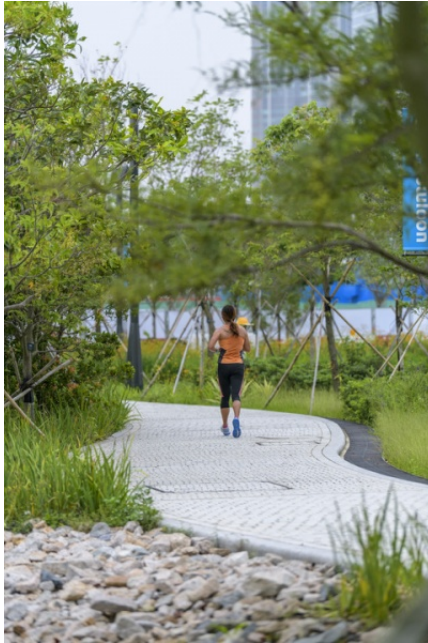


# WEST KOWLOON CULTURAL DISTRICT ART PARK

2014 ongoing, West Kowloon Cultural District, Hong Kong







The West Kowloon Cultural District is one of the largest cultural developments worldwide. Its vision is to create a vibrant cultural quarter for Hong Kong. Apart from several facilities to host and produce world-class exhibitions, performances and arts and cultural events, it will also provide 23 hectares of public open space including a park, a green avenue and a waterfront promenade, and will be well connected with the neighbourhood.

The vision for the Art Park is to create a quality green open space for Hong Kong. West 8 has been working closely with DLN and ACLA, local partners in Hong Kong, to work along side WKCD Authority in the Park Development since February 2014. This park will provide a vibrant venue for open-air performances of music, dance and theatre, as well as art exhibitions and other cultural programmes. It will become a waterfront park to inspire, promote and encourage cultural pursuits for all. Attention has been paid to shaded areas and topographic variation in designing the Park, providing pleasant environments and spacious lawns for leisure and relaxation. Areas for large-scale outdoor sculpture and installations curated by M+ will be integrated into the design.

The concept design confirms the locations of the arts and cultural venues within the Park, which will provide space for creative programming across all genres. The venues will be linked by a cultural boulevard, an extension of the Avenue that runs through the heart of the District. The venues/facilities include:

- The Arts Pavilion: Designed by VPANG architects ltd + JET Architecture Inc + Lisa Cheung, which will be situated on an elevated mound in the north-east segment of the Park, close to M+ and Artist Square, with views out to the Victoria Harbour.
- Freespace: A Black Box and an Outdoor Stage. The Black Box will be a flexible space located in the centre of the Park for standing and seated events across all genres, and will accommodate up to 900 people.
- The Lawn: A flexible space in the western area of the Park, capable of accommodating over 10,000 standing visitors for outdoor festivals, classical or pop music concerts, and other performances. A further flexible event space is planned for the southern segment of the Park near the waterfront, capable of hosting up to 5,000 people standing.

On 28th May 2019, the Art Park and the major part of the Waterfront promenade was opened together with the second performance venue within the plan: FREESPACE. In the past years the Park site has been used as a stage for large-scale public events and festivals. Automated bicycle rental system in Hong Kong was also installed on the site. So far the site has welcomed more than 660,000 visitors yearly to events such as the West Kowloon Bamboo Theatre, Mobile M+: INFLATION!, Clockenflap, BloHK Party and Freespace Happenings, one of Hong Kong's biggest outdoor festivals. These events are an important marker of growing audiences and successful programming, building anticipation for the opening of the major venues in the District and encouraging greater engagement with the arts.

More information can be found at [the official project website](#).

#### client

West Kowloon Cultural District Authority

#### partners

Dennis Lau & Ng Chun Man Architects & Engineers (Hong Kong) Ltd (DLN), ACLA (Hong Kong)

#### consultants

Hyder Ltd., JLL

#### team

Martin Biewenga, Adriaan Geuze, Rikus Beekman, Pieter Bertheloot, Maria Castrillo, Ela Chojecka, Fernando Diez, Christian Dobrick, Marco Garcia, Yichun He, Pieter Hoen, Joost Koningen, Perry Maas, Winnie Poon, Yu Shi, Janice Tung, Juan Tur, Ronald van Nugteren, Joris Weijts, Jie Xu